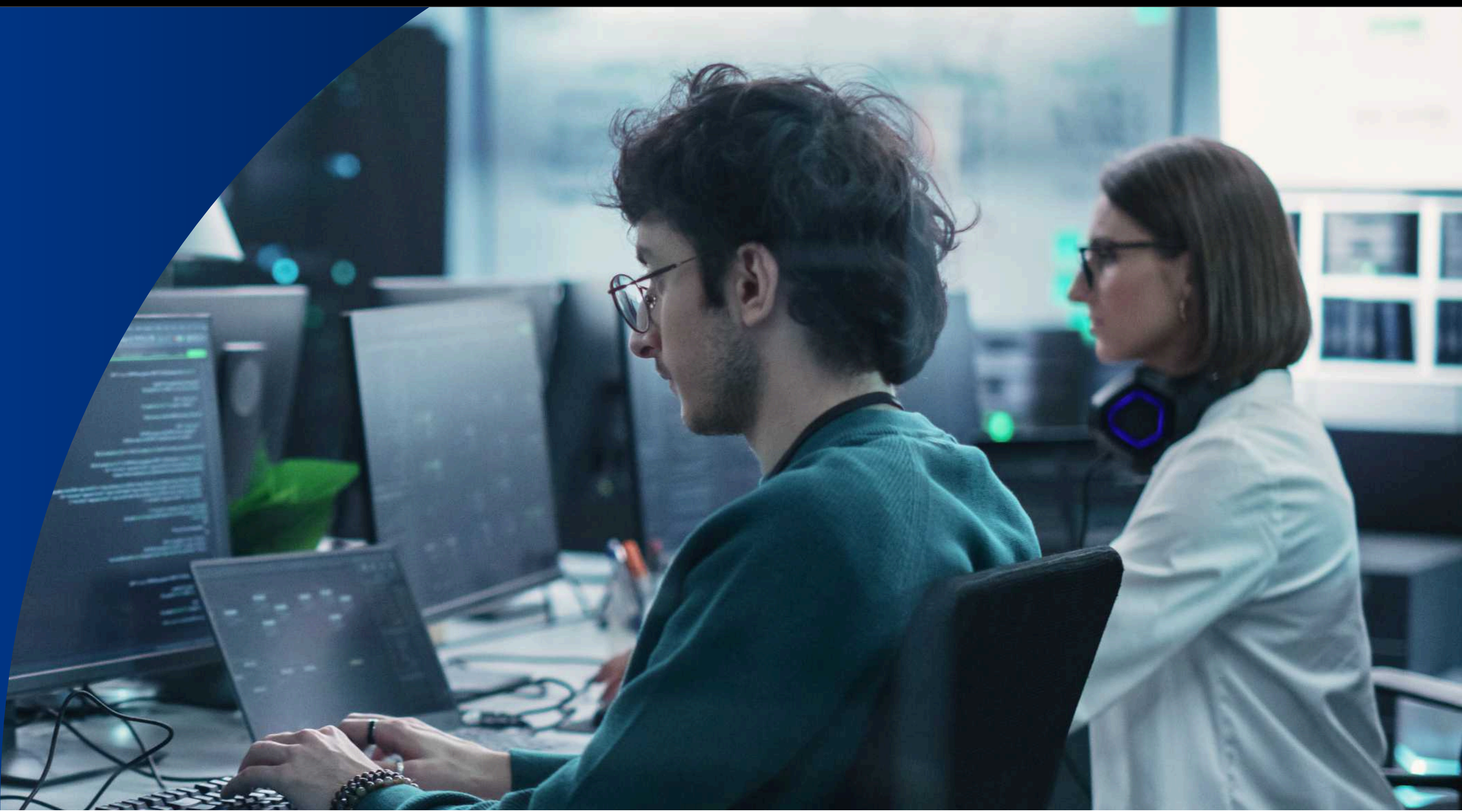


DEEPX AI Technology Support Program

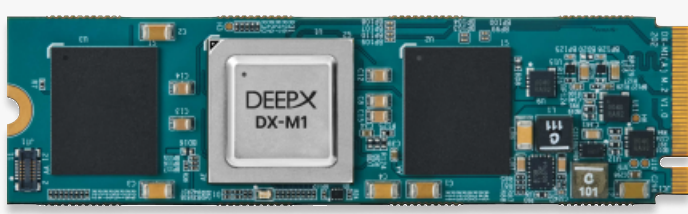
Empowering Your AI Innovation from First Prototype to Full-Scale Production. DEEPX's AI Technology Support Program offers two flexible paths to success: the **DX TechBridge Kit** for early-stage integration and the **Mass Production Plan** for full-scale development.



Option A

DX TechBridge Kit

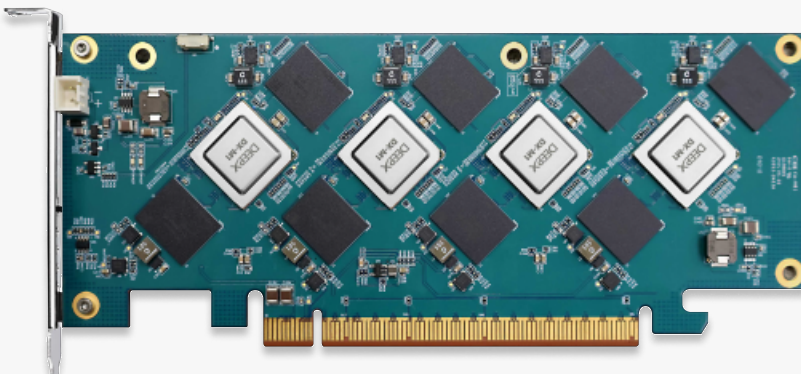
Start your AI journey with the **DX TechBridge Kit**—an entry-level solution designed to help you explore, prototype, and integrate DEEPX technology with confidence.



DX-M1 M.2 LPDDR5x2

Type: AI Accelerator
AI Performance: 25 TOPS / 3~5W
Form Factor: M.2 M Key (22 × 80 mm)
Interface: PCIe Gen.3 ×4
Memory: 4GB LPDDR5, QSPI 1Gbit NAND

\$3,000



DX-H1 PCIe Card Quattro

Type: AI Accelerator
AI Performance: 100 TOPS / 20W
Form Factor: PCIe Card (167 × 66.4mm)
Interface: PCIe Gen.3 (4×4×4×4 Bifurcation)
Memory: 16GB LPDDR5, QSPI 1Gbit NAND

\$5,000

Option B

Mass Production Plan

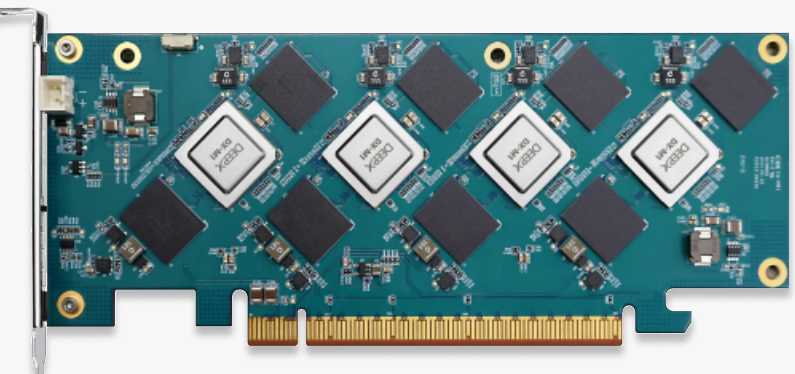
Launch your AI product to market with the **Mass Production Plan**—a comprehensive support program featuring expert engineering and model optimization for seamless AI deployment.



DX-M1 M.2 LPDDR5x2

Type: AI Accelerator
AI Performance: 25 TOPS / 3~5W
Form Factor: M.2 M Key (22 × 80 mm)
Interface: PCIe Gen.3 ×4
Memory: 4GB LPDDR5, QSPI 1Gbit NAND

\$50,000



DX-H1 PCIe Card Quattro

Type: AI Accelerator
AI Performance: 100 TOPS / 20W
Form Factor: PCIe Card (167 × 66.4mm)
Interface: PCIe Gen.3 (4×4×4×4 Bifurcation)
Memory: 16GB LPDDR5, QSPI 1Gbit NAND

\$50,000

Choose Your Tech Support

Whether you're just starting or getting ready to scale, both options give you the support you need—every step of the way.

	Option A		Option B	
	DX TechBridge Kit		Mass Production Plan	
Products	DX-M1 M.2 + SBC (ROCK 5B)	DX-H1 PCIe Card Quattro	DX-M1	DX-H1
Price	\$3,000	\$5,000	\$50,000 (Credit Granted)	\$50,000 (Credit Granted)
Supporting Period	10 hours	10 hours	50 hours	50 hours
Customer Jira Account	<input type="radio"/>	<input type="radio"/>	<input type="radio"/>	<input type="radio"/>
Developer Portal Account	<input type="radio"/>	<input type="radio"/>	<input type="radio"/>	<input type="radio"/>
• Quick Guide	<input type="radio"/>	<input type="radio"/>	<input type="radio"/>	<input type="radio"/>
• Online Video Course	<input type="radio"/>	<input type="radio"/>	<input type="radio"/>	<input type="radio"/>
• Model Zoo (Pre-Com)	<input type="radio"/>	<input type="radio"/>	<input type="radio"/>	<input type="radio"/>
• SDK (DX-RT)	<input type="radio"/>	<input type="radio"/>	<input type="radio"/>	<input type="radio"/>
• SDK (DX-COM)	<input type="radio"/>	<input type="radio"/>	<input type="radio"/>	<input type="radio"/>
Dedicated Engineer	<input type="checkbox"/>	<input type="checkbox"/>	<input type="radio"/>	<input type="radio"/>
Optimization Support	<input type="checkbox"/>	<input type="checkbox"/>	<input type="radio"/>	<input type="radio"/>

*Optimization Support : Supports AI Model Porting and Performance Optimization.



DEEPX Headquarters
5F, 20, Pangyoyeok-ro 241beon-gil, Bundang-gu,
Seongnam-si, Gyeonggi-do, 13494, Republic of Korea



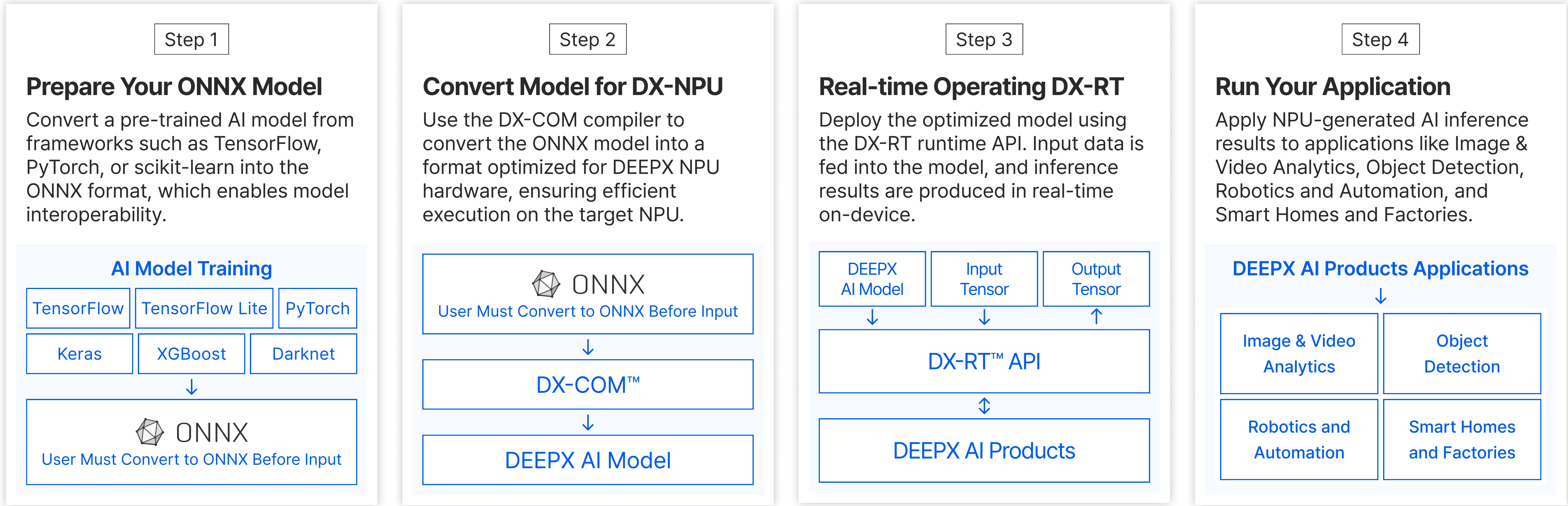
Apply - [DX TechBridge Kit](#)
Sales Support - sales@deepx.ai

DXNN® SDK

DXNN® (DEEPX Neural Network) SDK streamlines AI deployment on DEEPX NPUs by integrating version-aligned tools for compilation, optimization, simulation, and inference. For **efficient development**, it's offered as the **DX-AS (All Suite)**, a fully integrated and optimized package.



How It Works: 4-Step AI Deployment with DXNN® SDK



DXNN® Full Stack Architecture

DXNN® Full Stack Architecture streamlines AI model deployment onto DEEPX products using its two-stage AI Model Compile and Runtime Environments.

